

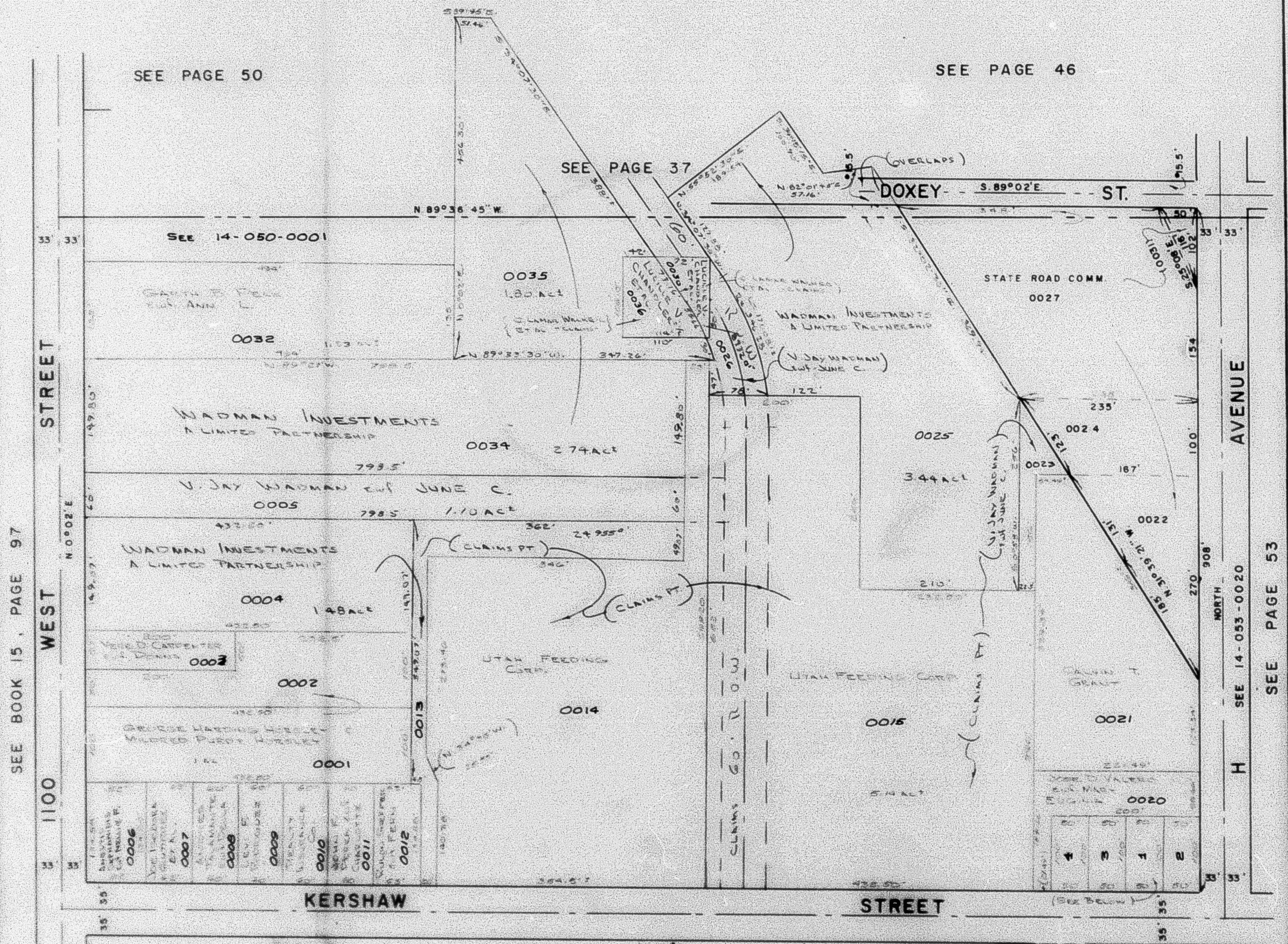
PART OF N.W. 1/4 OF
SECTION 31, T6N., R.1W., S.L.B.&M.

TAXING UNIT 25

IN OGDEN CITY

PREFIX 14-038

SCALE 1" = 100'



SEE PAGE 50

SEE PAGE 46

SEE PAGE 37

See 14-050-0001

DOXEY ST. S 89°02'E

STATE ROAD COMM 0027

WADMAN INVESTMENTS A LIMITED PARTNERSHIP

0034 2.74 AC

U. JAY WADMAN EUF JUNE C. 0005 1.10 AC

WADMAN INVESTMENTS A LIMITED PARTNERSHIP

0004 1.48 AC

0003

0002

0001

- 0006
- 0007
- 0008
- 0009
- 0010
- 0011
- 0012

KERSHAW STREET

STREET

AVENUE

SEE 14-053-0020

H

SEE PAGE 53

SEE PAGE 36

1	LEVI F RODRIGUEZ EUF LUCY 0016	2	REALTY INSURANCE CO. 0017
3	AMADOR KING EUF MARINE 0018	4	JERRY GALEGGIO EUF MARY L. 0019